

brought to you by www.thebacteriophages.org & www.phage.org

Fig. 26-4. The essential elements for P4 replication. Panel C. The minimal *ori1* sequence and the two direct repeats of *crr* are reported. The type I iterons are boxed. The arrows indicate the orientation and the number above the arrow the position of the first base of each iteron, respective to the first iteron from the left. For *ori2*, the sequence of the minimal 22 bp region is reported. Above the sequence, the five base substitution that inactivate *ori2* (D. Ghisotti, unpublished).

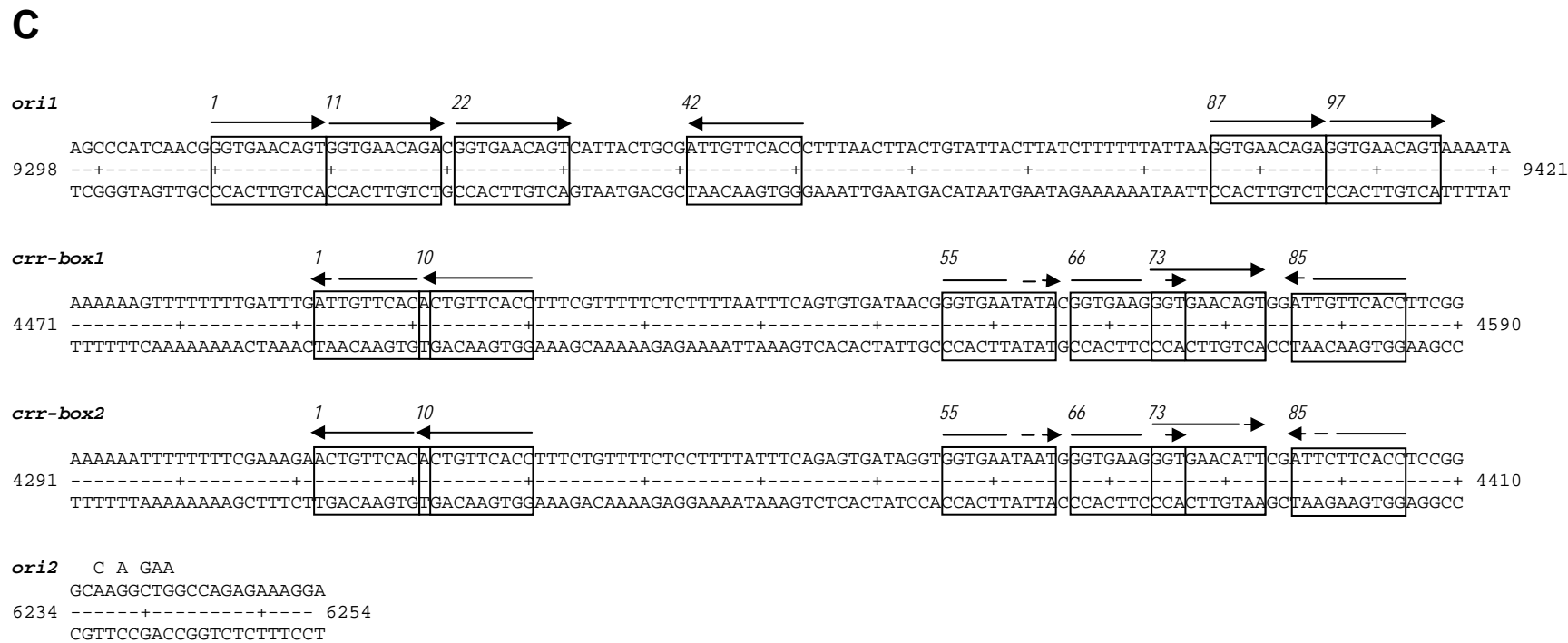


Fig. 26-4. The essential elements for P4 replication. Panel C. The minimal *ori1* sequence and the two direct repeats of *crr* are reported. The type I iterons are boxed. The arrows indicate the orientation and the number above the arrow the position of the first base of each iteron, respective to the first iteron from the left. For *ori2*, the sequence of the minimal 22 bp region is reported. Above the sequence, the five base substitution that inactivate *ori2* (D. Ghisotti, unpublished).